

Boston



Boston is situated on one of the most important sites in US history, which is also today the most 'happening' area in America's academic heartland. Amongst shops, restaurants and tourist attractions, and a stroll from leafy parks and the waterfront, is this welcoming yet ultra-modern school.



BOSTON FACTS

POPULATION
617,000

DON'T MISS

- Harvard University
- Salem
- Martha's Vineyard
- Faneuil Hall Marketplace
- Cape Cod beaches

DISTANCE TO AIRPORT

- Boston Logan - 5km



CENTRE INFO

- Centre capacity: 312
- Classrooms: 26
- Minimum age: 16 (18 in high season)
- Student computers: 43
- Free Wi-Fi
- Library facilities
- Self-study room
- Student lounge
- TOEFL Exam testing centre

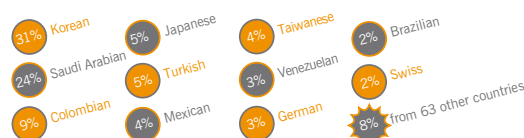
INCLUDED IN COURSE

- Course book
- English language activities and workshops
- Welcome event
- Internet access

COURSE INFO

- General English
- Semi-Intensive English
- Intensive English
- English for Work
- One-to-One
- Business English One-to-One
- Full Immersion
- Cambridge Exam Preparation
- IELTS Exam Preparation
- TOEFL Exam Preparation
- Academic Year 24/30
- Business Year
- University Foundation Programme
- Volunteer Programme

NATIONALITY MIX



Information is based on student weeks during 2010/2011. The nationality mix varies over different time periods, courses and levels

THE FACTS

REGISTRATION FEE: \$150

ACCOMMODATION PLACEMENT FEE: \$80

HIGH SEASON SUPPLEMENTS: (16 Jun-15 Sep)
Homestay: \$25 per week

CHRISTMAS SUPPLEMENT: (23 Dec-29 Dec)
Homestay: add 50% to homestay price

I-20 DOCUMENT COURIER FEE: \$65

MINIMUM AGE: 16 years
(18 years in high season) students aged 16 & 17 must book homestay

1 LESSON: 45 minutes

MINIMUM STAY: 1 week

CLASS SIZE: Average 12 (Max 14)

TIMETABLE:
Students alternate between morning and afternoon lessons on a daily basis

INCLUDED IN COURSE PRICE:

- Course book
- English language activities and workshops
- Welcome activity
- Internet access

COURSES START: Every Monday

CAMBRIDGE EXAM COURSE DATES:
FCE/CPE: 3 Jan - 9 Mar (10 weeks)
CAE: 3 Jan - 16 Mar (11 weeks)
FCE/CAE/CPE: 19 Mar - 8 Jun (12 weeks)
FCE/CAE/CPE: 10 Sep - 30 Nov (12 weeks)

Please note: exam fees are not included

UNIVERSITY FOUNDATION PROGRAM COURSE START DATES:
3 Jan, 5 Mar, 26 Mar, 29 May, 18 Jun, 10 Sep

ACCOMMODATION ARRIVAL DAY:
Saturday

ACCOMMODATION DEPARTURE DAY:
Saturday

PUBLIC HOLIDAYS ON A WEEKDAY:
2 Jan, 16 Jan, 20 Feb, 16 Apr, 28 May, 4 Jul, 3 Sept, 8 Oct, 12 Nov, 22 Nov, 23 Nov

CHRISTMAS HOLIDAY DATES:
24 Dec 2012 - 4 Jan 2013

COURSES

Short Courses (1-7 WEEKS)	lessons per week	\$ per week
General English	20	\$300
Semi-Intensive English	24	\$330
Intensive English	30	\$380
English for Work	30	\$380
One-to-One (blocks of 2 lessons)	2*	\$180
One-to-One (blocks of 10 lessons)	10*	\$720
Business English One-to-One (blocks of 2 lessons)	2*	\$200
Business English One-to-One (blocks of 10 lessons)	10*	\$840
Full Immersion	55	\$4215

*fewer than 20 one-to-one lessons must be combined with another course

Long Courses (8-23 WEEKS)	lessons per week	\$ per week
General English	20	\$275
Semi-Intensive English	24	\$300
Intensive English	30	\$345
English for Work	30	\$345

Exam Courses	lessons per week	\$ per week
Cambridge Exam Preparation 10-12 weeks (FCE, CAE, CPE)	30	\$345
IELTS Exam Preparation 4 weeks	30	\$380
IELTS Exam Preparation 8 weeks	30	\$345
TOEFL Exam Preparation 4 weeks	30	\$380
TOEFL Exam Preparation 8 weeks	30	\$345

Academic Year (24 WEEKS+)	lessons per week	\$ per week
Academic Year 24	24	\$280
Academic Year 30	30	\$315
Business Year	30	\$315

University Foundation Program	\$ per term
Community College Track	\$4200
Undergraduate Track	\$4200
Graduate Track	\$4200

EXTRAS, ACCOMMODATION AND AIRPORT TRANSFER

Volunteer Programme	placement fee
Volunteer Programme Minimum 8 week English course (not included) Minimum duration: 4 weeks	\$350

Homestay	room type	1-23 weeks	24+ weeks
Homestay	twin room half board	\$250 p/w	\$230 p/w
Homestay	single room half board	\$280 p/w	\$255 p/w

Residences	room type	\$ per week
Shared Apartment* - Allston	twin room	\$250
Shared Apartment* - Allston	single room	\$340
Shared Apartment* - 230 Commonwealth	twin room	\$300
Shared Apartment* - 230 Commonwealth	single room	\$450
Summer Residence - Fenway College (available 23 Jun - 11 Aug)	twin room	\$340
Summer Residence - Fenway College (available 23 Jun - 11 Aug)	single room	\$445

*reserved for bookings of 8 weeks+ from 16 June - Aug 14

Airport Transfer	one way
Boston Logan Airport	\$120

Why us ?

About us

Our first school was established in Malta in 1991 and quickly gained a name as one of the country's leading English language schools. Fast-forwarding to today you can see where this reputation for excellence has taken us. We now proudly consists of 12 schools in four countries on three continents, and this year alone, we will help over 25,000 students from over 140 countries to reach their English language goals.

Our destinations

London, Cambridge, Brighton, Bristol, Malta, Cape Town, New York, Boston, San Diego, San Francisco, Miami, Los Angeles. Not only do we select the most vibrant English-speaking destinations in the world, but we also settle for nothing less than the very best location in every one. You will find our centres in Times Square, New York, and the heart of London's West End. The most desirable St Julian's area is home to Malta, while Cape Town overlooks spectacular Table Mountain. Whichever of our 12 destinations you choose you can be assured that the top sights, most vibrant nightlife and richest cultural highlights are on your doorstep.

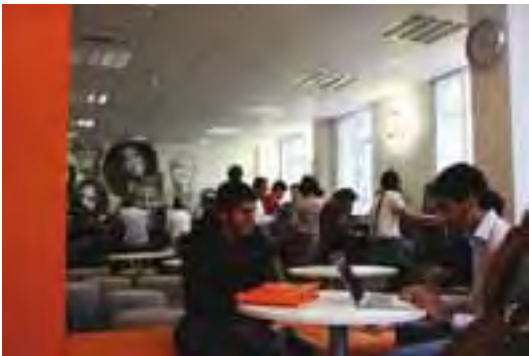


Our schools

Every centre is a lively, modern space, specifically modelled to create the best environment possible for effective learning and positive, informal interaction. Our classrooms and communal areas are designed in our signature style - airy and bright with an abundance of natural light. We also work to keep our schools up-to-date with new technology such as electronic whiteboards, and all the modern resources and facilities you need to reach your English language potential in comfort and ease. Free Wi-Fi is available throughout every centre.

97% of our students would recommend us to a friend

We are passionate about quality, and always looking for ways we can improve on what we do. As part of our dedication to excellence, we encourage honest, constructive feedback about the experience from all of our students. The responses we receive are consistently positive, and in the 21,000 course evaluations our students completed in 2011, an overwhelming 97% said they would recommend us to a friend.



Our Guarantee

As a student you will reach your goals: **GUARANTEED.**

Check out page 7 to see just how confident we are of your success...

Accreditations

Our centres are accredited by the leading associations in their respective countries and also by major international organisations. These accreditations prove our commitment to providing high quality and innovative English language courses in all of our centres.

UK CENTRES
Accredited by the  **BRITISH COUNCIL**  **ENGLISHUK** member  **UKBA** Highly Trusted Sponsor *

* EC Brighton, EC Cambridge, EC Bristol all Highly Trusted Sponsors. EC London awaiting status at time of print.

MALTA CENTRE
 **FELTOM** 

USA CENTRES
 **aaiep** American Association of Intensive English Programs 

SOUTH AFRICA CENTRE
 

ALL CENTRES
 **ALTO** Association of Language Travel Organisations

Your Learning Experience

Our students' success is the ultimate proof of the quality of our courses. We will provide you with all the tools and support you need to reach your goal. Guaranteed.

Our students receive more than just a first-class language course. The skills you will develop with us will enable you to think critically in English, present your thoughts and opinions successfully, and continue your learning effectively outside the classroom. With our support and empowering, holistic approach, you will have everything you need to take your learning to the next level.

Placement Test

Sitting a placement test on your first day tells us how much English you already know, so we can ensure you begin your journey with us at the right point and build on your existing strengths. You will be assigned to a class with students of the same level, and throughout your course you will sit progress and level tests to make sure your learning is on track.

Teachers

We believe that our teachers are our main asset. All of our teaching staff have a 'can-do' mind-set, and are experienced, dynamic and flexible enough to make sure that your individual needs are met. They will challenge, motivate, provide on-going support and encourage you throughout.

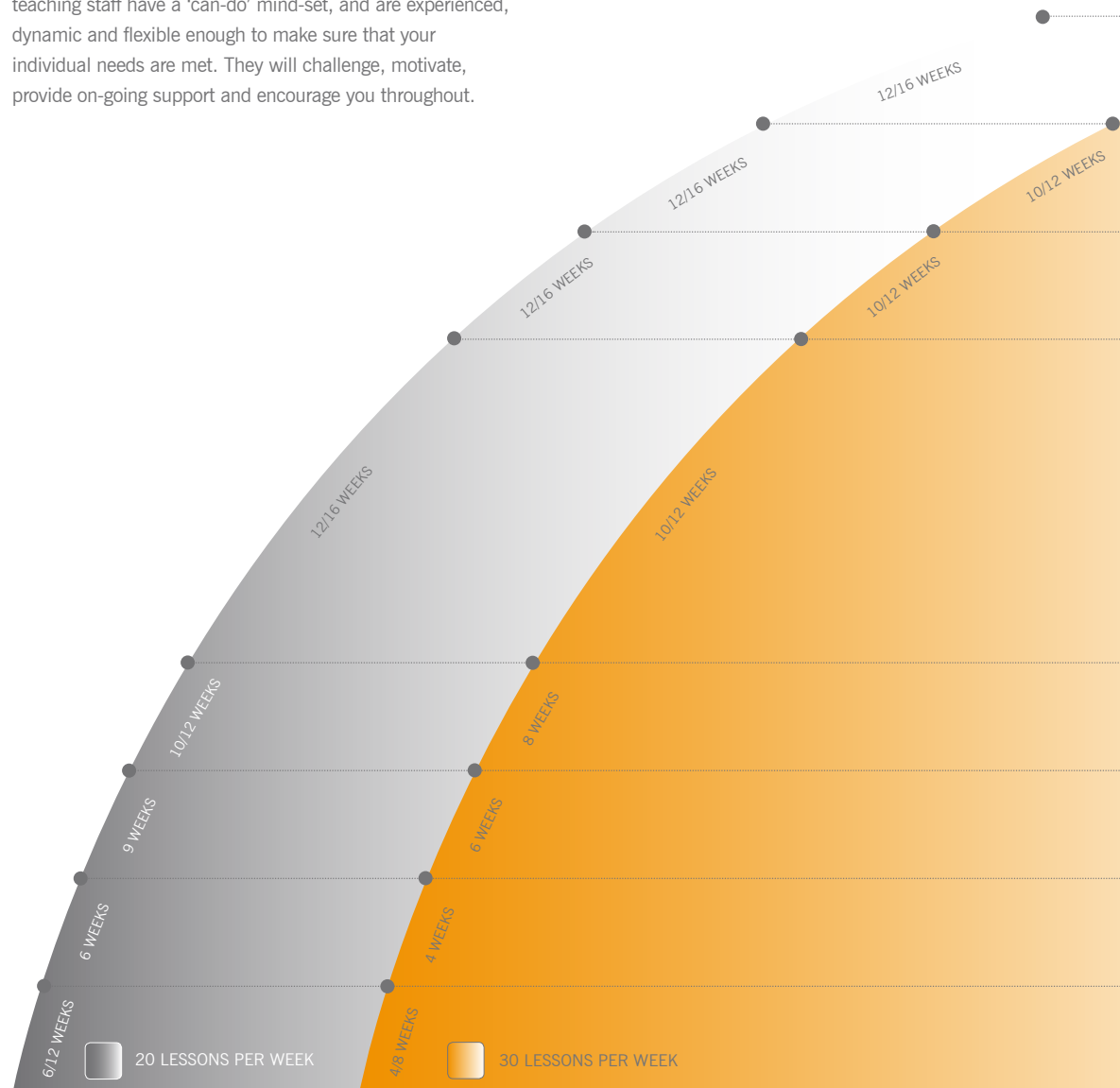
Lessons

Lessons are interactive, interesting and student-centred, with a focus on active use of the language, to ensure you remain highly motivated throughout your time with us. With our integrated approach, you will learn how English is spoken and used in many situations. Through the four skills of reading, writing, speaking and listening, you will learn how to use grammar, vocabulary and idioms effectively, gain practice and achieve fluency and confidence in the use of the language.

We will expose you to authentic English with the use of newspapers, videos, the Internet and recordings. Everything is taught in context, making it easier to apply what you have learned to any situation, be it professional, academic or informal.

Classroom Environment

To enhance your learning, our classrooms are relaxed, friendly and welcoming, where a nurturing and secure environment helps to build your confidence. We strongly believe that you learn more when you are comfortable and happy, so we put every emphasis on making that happen.



Result

By the time you leave us, you will have reached your target level, and achieved a deeper understanding and more sophisticated command of the English language. With enhanced linguistic skills, and the confidence to communicate in many different contexts with both the spoken and written word, new opportunities will have opened for you worldwide, in your work, your studies and your life.

Your learning experience may be challenging at times, but you will have an overwhelming sense of pride and accomplishment when you have reached your goal.

...and students find it doesn't stop there

According to your choice of destination, you will also benefit from the cultural experience of living and learning in a different country. You will enjoy an enriching multi-cultural environment, and strike new friendships with people from all around the world.

In addition to this, and perhaps most importantly, your experience will inspire and empower you to go on using and learning English beyond your time with us and far into the future.

10/12 WEEKS	<p>PROFICIENCY C2 You have near-full command of the language with consistent accuracy, fluency, appropriate usage and comprehension.</p>	PROFICIENT USER	CAMBRIDGE CPE IELTS 8.5-9 TOEFL ibt 110-120
	<p>ADVANCED C1 You have a good command of English and are able to read most types of texts and write accurately with few grammatical errors.</p>		CAMBRIDGE CAE IELTS 6.5-7 TOEFL ibt 79-101
	<p>UPPER INTERMEDIATE B2 You can use the language with confidence in all but demanding situations. Few lapses in accuracy and fluency.</p>	INDEPENDENT USER	CAMBRIDGE FCE IELTS 5.5-6 TOEFL ibt 46-78
	<p>HIGH INTERMEDIATE B2- You can use the language with some confidence but with noticeable lapses in accuracy and fluency.</p>		IELTS 5 TOEFL ibt 35-45
	<p>INTERMEDIATE B1+ You can communicate easily on everyday matters but have a limited range of expression.</p>		CAMBRIDGE PET IELTS 4.5
	<p>LOW INTERMEDIATE B1 You can communicate fairly easily on everyday problems but have a very limited range of expression.</p>		
	<p>PRE-INTERMEDIATE A2- B1 You understand most conversations spoken slowly and clearly.</p>		IELTS 4
	<p>ELEMENTARY A1-A2 You have basic knowledge of vocabulary and grammar. You can understand simple messages, instruction and directions.</p>	BASIC USER	CAMBRIDGE KET IELTS 3
	<p>BEGINNER A1 You have a very basic knowledge of vocabulary and simple grammatical structure.</p>		
<p>COMPLETE BEGINNER You have no knowledge of written or spoken English.</p>			

General & Semi-Intensive English

Suitable for every learner, our General and Semi-Intensive English courses work to improve your English, giving you a practical understanding of the language and how to use it.

SUITABLE FOR STUDENTS WHO:

- are any level
- want to improve their level and gain confidence in all areas of the English language
- want to develop their fluency and ability to use English in everyday situations and contexts



KEY FACTS

MINIMUM LEVEL

All levels

COURSES START

Every Monday

COURSE DURATION

Minimum 1 week
20 lessons per week
(15 hours)

24 lessons per week
(18 hours)

LESSON DURATION

1 lesson = 45 minutes

GENERAL ENGLISH AVAILABLE IN

(max students/class)

- London (14)
- Cambridge (14)
- Brighton (14)
- Bristol (14)
- Malta (12)
- Cape Town (12)
- Boston (14)
- New York (14)
- San Diego (12)
- San Francisco (14)
- Los Angeles (14)
- Miami (14)

SEMI-INTENSIVE ENGLISH AVAILABLE IN

(max students/class)

- Boston (14)
- New York (14)
- San Diego (12)
- San Francisco (14)
- Los Angeles (14)
- Miami (14)

Real English

You will experience how English is spoken and used in many real-life situations. Relevant and engaging lessons will develop your understanding of grammar, vocabulary, idioms and pronunciation, and allow you practise the four skills of everyday English: reading, writing, speaking and listening.

Creative and energetic classes

Our teachers are qualified and experienced, and when it comes to creating lessons, they know what works. Classes are dynamic, engaging and motivating, designed to activate and build upon your strengths, whilst also giving targeted attention to your weaker areas. Relaxed and informal classroom environments create an encouraging atmosphere, to help build your confidence, realise your potential and advance towards fluency.

Learn by doing

Progress is maximised as students are encouraged to learn by doing. Our task-based lessons focus on the active production of English, promoting class participation and interaction between students.

Improve your 'thinking time'

As your skills and confidence develop with support from your teachers, so too will your ability to listen, understand and respond quickly and effectively in English. You will notice these improvements most of all when you take your English outside of the classroom and into everyday conversation in one of our vibrant English-speaking destinations!

Expert support

Your teachers are trained to deliver on-going support, feedback and care throughout your time with us. You will be taught by at least two teachers, exposing you to a variety of voices, improving your listening and boosting your vocabulary.

Authentic materials

We believe there is no substitute for authentic English so, in addition to text books, our teachers use resources taken from newspapers, TV, radio and the Internet. The authentic nature of these materials gives our students an appreciation of the richness of the English language used in a variety of everyday contexts.

General English Timetable

4 LESSONS
5 DAYS PER WEEK

1ST MODULE

BREAK

2ND MODULE

2 LESSONS

BREAK

2 LESSONS

Semi-Intensive English Timetable

(Only in the US)

4 LESSONS
3 DAYS PER WEEK

1ST MODULE

BREAK

2ND MODULE

+

1ST MODULE

BREAK

2ND MODULE

BREAK

3RD MODULE

2 LESSONS

BREAK

2 LESSONS

BREAK

2 LESSONS

Intensive English

Maximise your time and focus your studies. During this course, you will gain fluency and accuracy at a quicker pace. You will build your core skills in General English Classes, whilst also targeting your learning through a choice of electives.



SUITABLE FOR STUDENTS WHO:

- wish to reach their linguistic goals quickly
- would like to personalise their course through a choice of electives
- would benefit from more time with a teacher in a classroom environment

More exposure to English

Extra exposure to English in the classroom is extremely valuable. As you engage and absorb more, you will naturally adjust to thinking and communicating in English. This is a great course for developing fluency.

Maximum teacher contact time

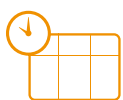
More time spent with your teachers means more time spent focusing on your individual needs. Your teachers are aware of your linguistic needs and lessons will be tailor-made to ease you into learning. With their expertise and support, your confidence will develop rapidly.

Intensive focus on all skills

As you are immersed in an intensive English environment, all your linguistic skills will improve. You will feel a great sense of achievement as you see rapid development in your reading, writing, speaking and listening, and acquire the ability to produce fluent, accurate English.

Useful, topic-based lessons

You will be directly and actively involved in lessons at all times. To supplement your textbook, a variety of current, relevant topics will be 'brought to life' with the use of authentic materials from the real English-speaking world.



Intensive English Timetable

6 LESSONS 5 DAYS PER WEEK



* With the ability to choose the focus of your 3rd module, you can personalise your course. Electives could include such choices as:

Comparative Culture & Communication

To develop awareness and understanding of different cultures, and how communication varies between them.

Write Now

To improve skills in writing for different audiences, using appropriate language in both formal and informal styles.

Basic Writing Skills

To help less advanced students boost their writing skills and develop confidence.

Media Studies

To sharpen analytical skills by studying a variety of news media, separating fact from opinion and analysing meaning.

The Language of Music

To explore and compare music of different types, cultures and eras, and learn the language to discuss it.

Film Studies

To develop critical skills by watching, analysing and learning to express thoughts on different types of film.

A World of Words

To gain inspiration and vocabulary to learn about and discuss world issues and global geography.

Get Talking

To develop confidence, practise conversation and develop a fluent speaking style.

Survival English

To develop a practical understanding of English and to activate this newly-acquired language in a variety of everyday situations.

Grammar in Real Contexts

To take a closer look at how the English language hangs together as a whole with a focus on relevance and appropriacy.

Academic Techniques in Practice

To focus on improving the skills you really need, such as writing assignments, note-taking and preparing presentations.

KEY FACTS

MINIMUM LEVEL

All levels

COURSES START

Every Monday

COURSE DURATION

Minimum 1 week
30 lessons per week
(22.5 hours)

LESSON DURATION

1 lesson = 45 minutes

AVAILABLE IN

(max students/class)

London (14)
Cambridge (14)
Brighton (14)
Bristol (14)
Malta (12)
Cape Town (12)
Boston (14)
New York (14)
San Diego (12)
San Francisco (14)
Los Angeles (14)
Miami (14)



CIB CANARIAS S.L. SOLICITUD DE INSCRIPCIÓN

Rellene esta solicitud en letras MAYÚSCULAS y envíe o entreguela a: CIB Canarias, s.l. C/ Lope de Vega, 30, Local - 38005 S/C de Tenerife, con 2 fotos tamaño carnet y una copia del comprobante de pago de la matrícula correspondiente en Lloyds Bank (0106-0070-11-0070043779).

En Canarias desde 1976

Incluir
2
FOTOS
tamaño carnet

CURSO SOLICITADO	Familia	Residencia	Familia	Residencia	REFERENCIA INTERNA
STEVENAGE (Ref. CIB-1)	<input type="radio"/>		EDIMBURGO (Ref. CIB-4)	<input type="radio"/>	<input type="radio"/>
BOURNEMOUTH (Ref. CIB-2)	<input type="radio"/>	<input type="radio"/>	MALTA (Ref. CIB-5)	<input type="radio"/>	<input type="radio"/>
LONDRES (Ref. CIB-3)	<input type="radio"/>	<input type="radio"/> (Ref.....)	<input type="radio"/>	<input type="radio"/>

¿Curso con beca? Sí* No *¿Cual?

Fecha inicio..... Fecha fin..... N° de semanas..... N° clases semanales..... N° horas semanales.....
dd/mm/aa

Ida-Aeropuerto llegada..... Fecha llegada..... Compañía..... N° de vuelo.....
dd/mm/aa

Servicio Transfer Vuelta-Aeropuerto salida..... Fecha salida..... Compañía..... N° de vuelo.....

DATOS PERSONALES DEL ALUMNO RELLENAR CON TINTA NEGRA

APPELLIDOS DEL ALUMNO NOMBRE FECHA DE NACIMIENTO EDAD SEXO
 CHICO CHICA

DIRECCIÓN COMPLETA POBLACIÓN CÓDIGO POSTAL

ISLA N° TELÉFONO FIJO N° MÓVIL (ALUMNO) N° D.N.I. (ALUMNO) NACIONALIDAD

LENGUA MATERNA E-MAIL N° FAX

PROFESIÓN CARÁCTER ABIERTO RESERVADO EDADES DE LOS HERMANOS PUESTO ENTRE LOS HERMANOS FUMA ¿VEGETARIANO/A?
 MAYOR MEDIO MENOR SÍ NO SÍ NO

INTERESES Y AFICIONES ENFERMEDADES INFANTILES PADECIDAS
 SARAMPIÓN VARICELA PAPERAS OTRA:

¿PADECE ALGÚN TIPO DE ALERGIA? SÍ* NO ¿PRECISA MEDICACIÓN DURANTE EL CURSO? SÍ* NO ¿SUFRE ALGUNA DISCAPACIDAD? SÍ* NO
*¿CUAL? *¿CUAL? *¿CUAL?

CENTRO DE ESTUDIOS CURSO NIVEL DE INGLÉS
 MUY ALTO ALTO MEDIO ELEMENTAL

¿QUIÉN LE RECOMENDÓ A CIB Canarias? ACADEMIA AMISTADES PUBLICIDAD COLEGIO INTERNET ¿HA VISITADO ANTERIORMENTE INGLATERRA EN VIAJE DE ESTUDIOS? SÍ* NO
 CON CIB CON OTRA EMPRESA -¿CUAL?

DATOS FAMILIARES

APPELLIDOS DE LA MADRE O TUTOR/A LEGAL NOMBRE PROFESIÓN

N° D.N.I. N° MÓVIL N° TELÉFONO OFICINA E-MAIL MADRE

APPELLIDOS DEL PADRE NOMBRE PROFESIÓN

N° D.N.I. N° MÓVIL N° TELÉFONO OFICINA E-MAIL PADRE

DIRECCIÓN DURANTE EL CURSO (SI DIFERENTE DE LA HABITUAL) N° TELÉFONO

SEGURO DE VIAJE SÍ NO FECHA DE INICIO DEL SEGURO dd / mm / aa FECHA DEL FINAL DEL SEGURO dd / mm / aa

SEGURO DE CANCELACIÓN SÍ NO SÓLO CONTRATABLE EN EL MOMENTO DE REALIZAR LA INSCRIPCIÓN. CONDICIONES Y PRECIO DISPONIBLES BAJO SOLICITUD.

OBSERVACIONES:

En.....a.....de.....de 20.....

Firma del estudiante o Tutor/a legal del menor

Confirmo la veracidad de los datos aportados, he leído ambos lados de esta solicitud y estoy conforme.

INSCRIBIA EN EL REGISTRO MERCANTIL DE S.A. CRUZ DE TENERIFE - H. T.F. 4039 - F. 125 - T. 1335 - S. GRAL. - 1.º



CIB Canarias, s.l.
C/. Lope de Vega, n° 30
38005 Santa Cruz de Tenerife
Tel.: (+34) 922-22 83 83
Fax: (+34) 922-22 72 56

CONDICIONES PARTICULARES

1. En aras de garantizar la prestación de unos servicios óptimos, principal objetivo de su actividad, SE RESERVA EL DERECHO A LA CANCELACIÓN O MODIFICACIÓN, total o parcial de cualquier curso previsto y cuando las circunstancias así lo aconsejaren y en casos de fuerza mayor.
2. En caso de menores, será requisito indispensable para contratar los servicios de CIB la autorización o permiso al menor para viajar o bien de la persona que ostente la tutela o guarda legal del menor. Dicha autorización o permiso se exteriorizará con la suscripción de la correspondiente solicitud y la aportación del PASAPORTE VÁLIDO Y EN VIGOR del menor. La aportación del pasaporte del menor será requisito indispensable aún cuando España pertenece a la UE y a fin de acreditar tal autorización.
3. Asistencia Médica y Condiciones Sanitarias
 - 3.1. Aunque se contrate un seguro privado de viaje, rogamos obtengan la Tarjeta Sanitaria Europea (TSE) en cualquier Centro de Atención e Información de la Seguridad Social (CAISS). *(Llevarla junto con la documentación personal)*
 - 3.2. En caso de que no tenga derecho al seguro social español, se recomienda la contratación de un seguro privado de viaje. En caso de enfermedad, si las consultas médicas aconsejan la devolución del estudiante para someterse a tratamiento, la repatriación será por cuenta del propio estudiante o su seguro privado de viaje.
 - 3.3. Si tiene que tomar alguna medicación durante su estancia o en caso de incontinencia, también debe informarnos en esta solicitud.
4. Actividades, Comportamiento y Datos
 - 4.1. Toda lección y actividad es obligatoria. El alumno debe llegar puntualmente a las clases, mostrar interés y cortesía a los profesores y realizar las tareas y proyectos que por los mismos le sean encomendados.
 - 4.2. Durante su estancia el alumno debe respetar las costumbres de la familia anfitriona y acatar las normas impuestas por ella. Ordenará su dormitorio, será puntual en las comidas, pedirá permiso para usar el teléfono (pagando el coste) y no invitará a amigos a casa sin permiso de la familia.
 - 4.3. De conformidad con la vigente Ley Orgánica 15/1999 de Protección de Datos de Carácter Personal, CIB le informa de que los datos personales del Contratante se incorporarán al correspondiente fichero de esta entidad, quedando ésta autorizada al tratamiento de los mismos para su utilización en relación con el desenvolvimiento de este contrato, así como para la oferta y contratación de otros productos y servicios del grupo.
 - 4.4. CIB se reserva el derecho a utilizar las fotografías e imágenes de vídeo obtenidas durante el desarrollo del programa con fines de autopromoción.
5. Salidas nocturnas
 - 5.1. CIB NO ACEPTA RESPONSABILIDAD POR LOS ALUMNOS QUE EFECTÚEN SALIDAS NOCTURNAS ya que a partir de las 12:00 horas no estarán bajo la tutela de la organización.
6. Medidas correctoras del alumno por mala conducta o incumplimiento de las leyes locales
 - 6.1. En caso de producirse una infracción de las normas establecidas por CIB, concurrir mala conducta o incumplir las leyes locales, se podrán adoptar alguna de las siguientes medidas correctoras:
 - a) Aviso verbal
 - b) Repatriación del alumno.
 - 6.2. Los gastos del viaje de repatriación correrán por cuenta del estudiante o sus padres o representantes legales, así como las indemnizaciones por los daños y perjuicios causados a terceros, multas, etc. CIB deberá ser resarcida de los gastos efectuados como consecuencia de la mala conducta del alumno. Igualmente CIB deberá ser resarcida de los gastos efectuados en caso de emergencia, muerte, accidente o enfermedad del alumno.
 - 6.3. CIB se compromete a desempeñar sus cometidos con la debida diligencia para asegurar el correcto desarrollo de los cursos y a vigilar o controlar los servicios que por terceros deban ser prestados, haciendo todas las gestiones que estén a su alcance en beneficio del estudiante, pero no responderá de los daños y perjuicios causados o que se causen por terceros ajenos a la organización, ni tampoco asumirá responsabilidad por robos, pérdidas de ropa o equipaje, dinero o pertenencias particulares.

Los abajo firmantes en tanto que participantes y padres o tutores de dicho participante en el programa renunciamos expresamente a cualquier reclamación o acción contra CIB, sus colaboradores, agentes, profesores, acompañantes de grupo, centro de estudios y que se deriven de accidentes, retrasos, irregularidades o gastos devengados por causa de huelga, guerra, condiciones atmosféricas, cuarentena, restricciones u órdenes gubernativas, o por los daños corporales y materiales producidos como consecuencia de los servicios prestados por líneas aéreas, navieras, transportes públicos o privados, hoteles, restaurantes, o cualquier otro tipo de servicio ajeno.

Enterado y conforme con el condicionado de participación suscrito.

Firmado:

EL ALUMNO/A

Menores de 18 años
EL PADRE / MADRE o
TUTOR/A LEGAL