

GOUGO

SCHOOL OF ENGLISH



Learn English in Scotland

2012

Welcome

ES&E was founded in 1969 and has gained a reputation as one of the UK's leading English language schools. With over 40 years' experience of providing the highest standards of personal service to students, it has developed a variety of general, specialist and academic English courses to suit both adults and young learners. ES&E is a member of English UK and is accredited by the British Council.

Courses for Adult Learners *pages 6-11*

Courses for Young Learners *pages 12-16*



Study English in the heart of Scotland

Courses for students and adults aged 18 years and over

The school stands proudly on the historic Royal Mile – the most famous street in Scotland. E S E is housed in a magnificent 1820's building. Behind the facade, the building has been transformed into a bright, well-equipped and modern English language school.

- our staff are committed to excellent service and programme delivery
- we offer you the benefit of over 40 years' experience in language education
- you will receive personal support and attention to help you make maximum progress
- you will study in an historic building uniquely located in the heart of Edinburgh's Old Town
- we organise a programme of social activities to help you use your English as you enjoy all that Scotland's rich culture has to offer.

Edinburgh is the breathtakingly beautiful capital of Scotland and an exciting place to visit at any time of the year. The city offers a vibrant cultural life with superb sightseeing, historic buildings to explore, galleries and museums to intrigue you, and a vast array of shops, restaurants and cafes to suit a wide range of tastes.

Every summer, the city hosts the world-famous Edinburgh International Festival and the Festival Fringe. Edinburgh is also a perfect base to explore Scotland's highlands and islands, with their rugged coastlines, mountains, lochs and glens.

Summer programmes for 9-17 year olds

Our courses for Young Learners combine our philosophy of learning English in a fun way, together with a cultural and activity programme that ensures our students develop their skills, knowledge and confidence during their stay.

Students are taught in small, multinational groups. Our friendly and professional teachers offer a dynamic and motivating learning environment to help our students succeed. Every aspect of our programme is designed with the welfare of the student in mind: safe, convenient locations, excellent facilities and carefully selected accommodation.

Our Young Learners usually join us for short courses during the summer holidays. Some students come in groups, some as individuals. The common factor is that they all enjoy spending time here and, when they leave, they are very proud of the progress they have made in learning English.



An academic environment

Become a high achiever

ES E is a well established language school with over 40 years of experience in helping students achieve their goals. We offer a studious environment in which we teach our students to use English more competently and become confident language users in a Globalised world.

An academic environment

Our courses are aimed at developing students' knowledge, skills and confidence through intensive programmes to ensure maximum progress and results. We offer our students a challenging and dynamic environment with the support of professional and experienced teachers.

Our academic approach

- We build our students' confidence and competence in the language to become more fluent in real life situations
- Our structured and innovative syllabus involves students in different kinds of learning activities to help them improve more quickly
- We promote a positive and encouraging learning environment for students to meet their own expectations and personal goals
- Our teachers are trained to assess and meet our students' needs, ensuring a focused programme with visible progression.



Our learning approach

Our Courses include:

Language skills lessons to develop language competency

Each lesson is designed to concentrate on developing one of the four key skills of speaking, listening, reading and writing to practise and produce new language. These lessons enable students to speak and write more accurately and become more effective communicators.

Communication skills lessons to build confidence and fluency

- **Plenary Sessions**

Designed to bring the students together at the start and the end of the school day. The morning plenary acts as a warm-up session, with presentations on topical news items. The afternoon plenary gives students an opportunity to reflect on the learning experience from their day.

- **Spoken Performance Workshop**

Under the teacher's guidance, students are set tasks which challenge them to develop their speaking skills across a range of different everyday situations and promote active expression in the language. There is a focus on pronunciation, presentations and debates.

- **Team Project**

Each week, students work within small teams to produce and deliver a project that gives them real-life practice in presenting and formal writing. Students will also develop problem solving, collaboration, organisation and planning skills.

- **Masterclass**

Each week the teacher will set individual goals for the students based on their specific language needs. With teacher guidance, students work independently to achieve their learning goals.



Courses for general and academic purposes

■ Intensive Study

Designed to develop students' language skills for effective communication in everyday English. The structured curriculum integrates grammar, vocabulary and pronunciation, with the four skill areas of:

- speaking and listening
- reading and writing

The combination of language lessons and communication lessons enables students to develop their confidence, skills and fluency. Students' individual needs are identified and each day students work on these in the Masterclass session. A variety of learning activities are used including, surveys, questionnaires and research projects, role play and communication games. Authentic materials such as newspapers articles, literary texts, real world audio and video provide the resources for talks, debates, information exchanges and presentations.

Full Time

- 15 hours of language skills lessons (maximum group size 8)
- 12.5 hours of communication skills lessons: Workshops, Masterclasses and Team Project (maximum group size 12)
- Beginner to Advanced
- Minimum age: 18 years

Part Time

- 10 hours of language skills lessons (maximum group size 8)
- 7.5 hours of communication skills lessons: Workshops and Team Project (maximum group size 12)
- Beginner to Advanced
- Minimum age: 18 years

Course Dates

- Courses start every Monday throughout the year. Students should arrive in Edinburgh on the Sunday.

Fees per week	Full time	Part time
2-3 weeks	£441	£287
4-7 weeks	£421	£287
8-11 weeks	£401	£287
12-23 weeks	£381	£287
24+ weeks	£371	£287

- For a 1 week course, add a supplement of £80 to the 2-3 week price



Sample Timetable: General English

08.45 - 09.00	- Plenary session: news review
09.00 - 10.00	- Spoken Performance Workshop
10.00 - 10.15	- Break
10.15 - 11.15	- Grammar and vocabulary
11.15 - 11.30	- Break
11.30 - 12.30	- Speaking and listening skills
12.30 - 13.00	- Team Project
13.00 - 14.00	- Lunch
14.00 - 15.00	- Reading and writing skills
15.00 - 15.15	- Break
15.15 - 16.15	- Masterclass
16.15 - 16.30	- Plenary session: consolidation

All timetables are samples and may be subject to change.

All course fees include:

- First day welcome orientation
- Individual assessment of language level and needs
- Regular progress tests
- Regular feedback sessions with your teacher
- Loan of all course materials
- Free use of multimedia and self-study resources
- Certificate of studies and report
- Activities programme - see p.11



■ Examination Preparation Courses

- First Certificate in English (FCE)
- Cambridge Advanced Certificate (CAE)
- Cambridge Proficiency in English (CPE)
- IELTS

The English has a track record of helping students to achieve excellent examination results. This success is gained through our examination sessions which allow you to focus on exam preparation and practice areas specific to your own needs. You will be trained to communicate effectively in a wide range of themes and topics. In developing competency with the spoken test, students will be trained in social, negotiating and collaborative skills. These skills are transferable to everyday contexts, to formal study and to professional situations.

Tuition / Classes

- 15 hours of language skills lessons (maximum group size 8)
- 12.5 hours of communication skills lessons: Workshops, Masterclasses and Team Project (maximum group size 12)
- Minimum level: Intermediate
- Minimum age: 18 years

Cambridge Exams

Course Dates

Cambridge FCE, CAE, CPE

16.01.12 - 09.03.12 (8 weeks)**

16.04.12 - 08.06.12 (8 weeks)*

08.10.12 - 30.11.12 (8 weeks)*

Cambridge FCE, CAE

25.06.12 - 17.08.12 (8 weeks)*

* On these courses, the exam takes place the week after the course end date and therefore students should book an additional week's accommodation.

** The FCE and CPE exam take place on 10.03.12 and therefore students should book one additional night's accommodation. The CAE exam takes place on 17.03.12. and therefore students require an additional week's accommodation.

Course Fees

8 week course £3208

- Exam fees: FCE, CAE, CPE £120

IELTS Exams

Course Dates

Courses start every Monday

Course Fees

2-3 weeks £441

4-7 weeks £421

8-11 weeks £401

12-23 weeks £381

21+ weeks £371

- Exam Fee: IELTS £130
- Exam entry should be booked well in advance of exam date

BULATS test

All students can complete their course with a Cambridge certificate which is recognised worldwide and by the Council of Europe. The BULATS test can be taken anytime during the course.

BULATS test fee £35



Sample Timetable:

Exam Preparation

08.45 - 09.00 - Plenary session: news review

09.00 - 10.00 - Spoken Performance Workshop

10.00 - 10.15 - Break

10.15 - 11.15 - Grammar and vocabulary

11.15 - 11.30 - Break

11.30 - 12.30 - Speaking and listening skills

12.30 - 13.00 - Team Project

13.00 - 14.00 - Lunch

14.00 - 15.00 - Reading and writing skills with exam focus

15.00 - 15.15 - Break

15.15 - 16.15 - Masterclass: guided exam practice

16.15 - 16.30 - Plenary session: consolidation

All timetables are samples and may be subject to change.



Courses for professional and specialised purposes

■ Combination Course

General English group work is followed by individual tuition in areas of English specific to your own business or academic study. This combined approach allows you to aim for fluency in the international setting of the classroom while you and your tutor examine particular areas of personal language weakness or areas of specialist interest such as English for business, tourism, banking or marketing. It is a demanding but rewarding pattern of work.

Tuition / Classes

- 15 hours of language skills lessons (maximum group size 8)
- 7.5 hours of communication skills lessons: Workshops and Team Project (maximum group size 12)
- 5 hours (Combination 5) or 10 hours (Combination 10) per week of individual tuition
- Beginner to Advanced
- Minimum age: 18 years

Course Dates

- Courses start every Monday throughout the year. Students should arrive in Edinburgh on the Sunday.

Fees per week	Combination 5	Combination 10
1 week	£815	£1151
2-3 weeks	£735	£1071
4-7 weeks	£715	£1051
8-11 weeks	£695	£1031
12-23 weeks	£675	£1011
24+ weeks	£665	£1001



Sample Timetable: Combination Course

08.45 - 09.00 - Plenary session: news review
09.00 - 10.00 - Spoken Performance Workshop
10.00 - 10.15 - Break
10.15 - 11.15 - Grammar and vocabulary
11.15 - 11.30 - Break
11.30 - 12.30 - Speaking and listening skills
12.30 - 13.00 - Team Project
13.00 - 14.00 - Lunch
14.00 - 15.00 - Reading and writing skills
15.00 - 15.15 - Break
15.15 - 16.15 - Individual lesson
16.15 - 16.30 - Break
16.30 - 17.30 - Individual lesson (for Combination 10)

All timetables are samples and may be subject to change.

■ Tutorial Course

Take our Tutorial Course to make the fastest possible progress. Individual programmes of 15, 20, 25, 30 and 35 hours per week are available for clients requiring the most intensive programmes.

One-to-one lessons offer students a programme which is designed precisely to their own unique requirements. In this way, you make the maximum possible progress because the teacher is able to focus on your needs and your personal learning style in every lesson.

Throughout the day, you can supplement your lessons with self-study in our quiet areas or self-access centre. This helps to consolidate the work done during lessons. Teachers set self-study exercises and give direction and guidance for students to maximise the consolidation time between lessons.

Fees per week

Number of tutorials	15	20	25	30	35
1 week	£1088	£1424	£1760	£2096	£2432
2-3 weeks	£1008	£1344	£1680	£2016	£2352
4-7 weeks	£988	£1324	£1660	£1996	£2332

Tuition / Classes

- 15, 20, 25, 30 or 35 hours of individual tuition per week
- Beginner to Advanced
- Minimum age: 18 years

All timetables are samples and may be subject to change.

Course Dates

- Courses start every Monday throughout the year. Students should arrive in Edinburgh on the Sunday.

Sample Timetable: 25 individual lessons

09.00 - 10.00 - Grammar and Vocabulary
10.00 - 10.15 - Break
10.15 - 11.15 - Listening, Comprehension and Reading
11.15 - 11.30 - Break
11.30 - 12.30 - Oral Practice
12.30 - 13.30 - Lunch
13.30 - 14.30 - Reading and writing skills
14.30 - 15.00 - Break
15.00 - 16.00 - Competent Communication

All timetables are samples and may be subject to change.

■ *Teacher Training Courses*

The Refresher Course and Summer Methodology Course are aimed at secondary and adult teachers engaged in planning and/or delivering ELT programmes. Our Refresher Course provides teachers with language improvement as well as practical teaching techniques. Our Summer Methodology Course focuses purely on learning and teaching methodologies.

Both courses are designed to provide in-service training and/or to be a refresher course for experienced teachers.

The Content and Language Integrated Learning (CLIL) course is aimed at teachers who teach their curriculum subjects wholly or partly in English to learners aged 11 and upwards.

European Union nationals can apply for funding for E S E courses through a Comenius or Grundtvig grant.



Refresher Course for Teachers of English

Full time

- 10 hours per week of general English lessons (max 8 per class)
- 7.5 hours per week of Workshops and Team Project (max 12 participants)
- 10 hours of Teachers Methodology (max 12 per class)
- Upper Intermediate to Advanced

Course Start Dates

05.03.12, 02.04.12, 07.05.12, 10.09.12, 08.10.11, 05.11.12

Fees per two week course

2 weeks £910

Summer Teachers Methodology

Part time

- 20 hours per week of Teachers Methodology (max 12 per class)
- Upper Intermediate to Advanced

Course Start Dates

02.07.12, 16.07.12, 06.08.12

Fees per two week course

2 weeks £672

Content and Language Integrated Learning

Part time

- 20 hours per week of Teachers Methodology (max 12 per class)
- Intermediate to Advanced

Course Start Dates

16.04.12, 13.08.12

Fees per two week course

2 weeks £672



Accommodation, leisure and travel

Accommodation

Homestay

ES E has a range of homestay who provide a friendly and welcoming environment in which to practise English. All our families are carefully chosen to ensure that high standards are maintained and our Accommodation Officer visits our homestay providers on a regular basis.

All students have a single room, a quiet area to study, breakfast, evening meal and are encouraged to speak English as much as possible. Some hosts are able to accommodate more than one student, but no two students of the same mother tongue are placed together unless specifically requested.

Self-catering

ES E can help students find self-catered accommodation in studio and shared apartments. We work closely with a number of agencies who offer such accommodation and which are in central locations close to the school. Shared apartment accommodation is available during the months of July and August. Information on studio apartments outside the summer season is available upon request.

Residential accommodation

(available only during July and August)

Our residential accommodation is situated next to Edinburgh's stunning Holyrood Park, at Edinburgh University's Pollock Halls. Pollock Halls is close to the city centre; approximately a 25-minute walk to the school or a short bus ride. All the rooms are single study bedrooms with shared facilities and are serviced daily.

Accommodation Fees

Accommodation	Homestay	En-suite Homestay	Residence	Self-Catering Apartment
Fees per week	£175	£275	£345	£250*
Extra night	£35	£45	£55	£40

- Arrival Sunday prior to course start date, departure Saturday
 - Accommodation in both homestay and residence is single room with half board
- * Self-catering rate is based on a shared apartment. Information on studio apartments available upon request



Leisure

A variety of social and cultural activities are available to students throughout the week, helping them to get to know Edinburgh and Scotland. To make the most of their time in Scotland, students can also choose from overnight and day trips at the weekends to famous castles and locations such as Loch Ness.



Sample weekly activities programme (summer)

Monday	Tuesday	Wednesday	Thursday	Friday	Saturday	Sunday
City Sightseeing Tour Approx. £11	Ceilidh or Scottish Dancing Approx. £8	Museum of Scotland FREE	Royal Botanic Gardens FREE	Scottish Pub Night FREE	Highlands and Loch Ness Trip Approx £95*	
					*Includes all travel, accommodation, meals and entry fees	

Activities occur DAILY in the summer and 3 times per week in the winter.

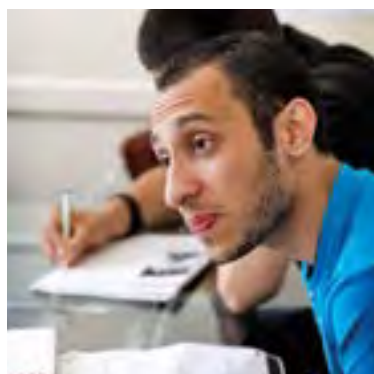
Travel

Edinburgh airport is conveniently located a short distance from the city centre. We are happy to provide an individual executive airport transfer service for students who would like to be met on arrival. There is also an excellent bus connection from the airport into the city centre, with a journey time of approximately 30 minutes.

Airport Transfer Service

One way	£50
---------	-----

When staying in Edinburgh, the local bus service offers a frequent and far reaching service to all parts of the city. A city bus pass will allow you unlimited travel on most of the city's buses. These passes are available close to the school and are used by the majority of students at the school.



Courses for Young Learners

■ *Edinburgh: course for 14-17 years*

In a very short time, our Young Learners grow to love and feel at home in this vibrant capital city. We take them to places such as Edinburgh Castle and to the Royal Holyrood Palace. Without leaving the city, we climb hills, walk through gardens and run along the beach. We also learn about Scotland's great writers and artists.

The Edinburgh course is held at Mary Erskine School, which is about 15-20 minutes from the city centre by bus. Each class has a maximum of 12 students. The school has spacious, modern classrooms. Modern amenities include astro turf playing fields, a large sports hall and tennis courts. Cooked and buffet lunches, which are included, are provided in the school's dining hall.

There is a choice of accommodation options:

Homestay

Homestay accommodation is a great opportunity for students to live everyday life in Scotland. Our families are experienced and really enjoy welcoming students into their homes. We usually place two students with each family, where they stay in a comfortable twin room. We ensure that they are always placed with a student of a different nationality, affording them yet more opportunities to practise their English. We provide each student with a bus pass, which enables them to get around the city.

Residence

Our residential accommodation in Edinburgh is situated at Edinburgh University's Pollock Halls of Residence. The spacious campus provides lots of charming green areas for students to enjoy and the residence lies directly beneath Arthur's Seat, the extinct volcano that dominates the Edinburgh skyline. The single study bedrooms are bright and airy and the shared facilities are excellent. Students who choose to stay in residence are transferred to Mary Erskine School by private transport, accompanied by our residential staff.

For families who are accompanying their children and have alternative accommodation organised, we can offer a 'No accommodation' option. Please contact us for further information.



Edinburgh

Tuition

- 15 hours per week (20 lessons of 45 minutes)
- Small classes, maximum 12
- Loan of text books to be used in class
- Full class report and Certificate of Studies

Homestay accommodation

- Placement with families in twin rooms
- Includes full board (lunches in school Monday to Friday)
- Only one student of any nationality per family
- Organised activities: four afternoons and three evenings per week
- Full day Saturday excursion

Residential accommodation

- Accommodation at Edinburgh's University Halls
- Single study bedrooms with wash basins
- Includes full board (lunches in school Monday to Friday)
- 24-hour supervision
- Coach transfer between residence and school
- Organised activities: four afternoons and seven evenings per week
- Full day Saturday excursion and half day Sunday excursion
- All Young Learners staying in Residence must pay £50 caution money on arrival.

Course dates and fees (including accommodation)

2 week programmes	Homestay	Residential Option
01.07.12 - 14.07.12	£1428	£1995
08.07.12 - 21.07.12	£1428	£1995
15.07.12 - 28.07.12	£1428	£1995
22.07.12 - 04.08.12	£1428	£1995
3 week programmes		
01.07.12 - 21.07.12	£2142	£2992
08.07.12 - 28.07.12	£2142	£2992
15.07.12 - 04.08.12	£2142	£2992

- Arrival Sunday – Departure Saturday



Course details

Age

- 14-17 years

Activities

- Visits to Edinburgh Castle and National Gallery of Scotland
- Guided walks
- Sports, including swimming, football and tennis
- Scottish Ceilidh with dancing

Activities shown are examples and may be subject to change.

Transport

- Bus pass provided

Airport Transfers

- Airport transfers included from Edinburgh airport on arrival and departure (standard transfer times: 09.00-20.00). Outside of these times a supplement of £55 each way is payable.



Courses for Young Learners

■ *St Andrews: course for 9-13 years*

St. Leonards school occupies its own campus in a prominent position in the historic town centre of St. Andrews, a thriving and charming university town on the Fife coast. St. Andrews is well known for its colourful history, castle and cathedral ruins, miles of sandy beach and a long-established golf tradition. Its secluded yet central location offers our Young Learners the fun of open-air pursuits in freedom and safety.

With an indoor swimming pool, large sports hall, outdoor pitches, tennis courts and a theatre hall, it is the ideal setting for a great variety of sports and cultural activities.

St. Leonards provides a first-class working environment and students study English in the mornings in bright, well-equipped and modern classrooms. They enjoy lessons that are designed to be challenging yet fun and to improve language accuracy, fluency and communicative skills. Our classes are limited in size in order to encourage maximum participation from each student.

In the afternoon our Young Learners enjoy sports and excursions, with planned entertainment in the evening. On this large campus, students can explore and enjoy the wide range of facilities as well as discovering the attractive town of St. Andrews and its numerous visitor attractions. We also explore the hills and the coast, and we visit other parts of Scotland, such as the cities of Edinburgh, Stirling and Dundee.

Accommodation

St. Leonards offers excellent residential accommodation on campus. The house comprises of comfortable single and double study bedrooms, ample shared bathroom facilities and a bright common room looking onto a private garden. Members of E S E staff stay on each floor of the residence so there is always an adult on hand for anything the students need.



St. Andrews

Tuition

- 15 hours per week (20 lessons of 45 minutes)
- Small classes, maximum 12
- Loan of text books to be used in class
- Full class report and Certificate of Studies

Residential accommodation

- Accommodation on campus
- Single study bedrooms with wash basins
- Includes full board (lunches in school Monday to Friday)
- 24-hour supervision
- Organised activities: four afternoons and seven evenings per week
- Full day Saturday excursion and half day Sunday excursion
- All Young Learners staying in Residence must pay £50 caution money on arrival.

Course dates and fees (including residential accommodation)

2 week programmes	Residential
08.07.12 - 21.07.12	£1764
22.07.12 - 04.08.12	£1764
4 week programme	
08.07.12 - 04.08.12	£3528

- Arrival Sunday – Departure Saturday



Course details

Age

- 9-13 years

Activities

- Traditional Scottish dancing
- Sports, including swimming, tennis and volleyball
- Beach trips
- Treasure hunt

Activities shown are examples and may be subject to change.

Airport Transfers

- Airport transfers included from Edinburgh airport on arrival and departure (standard transfer times: 09.00-20.00). Outside of these times a supplement of £130 each way is payable.



Services and Facilities for Young Learners

Caring for Young Learners

We have learned from experience that happy students are the best learners; that's why we make welfare our top priority. We aim to provide the best possible care through good organisation, careful selection of staff and accommodation, constant supervision and swift attention to any problems, however small. All this adds up to optimum safety and happiness.

Our staff

Each of our teaching centres is run by a Course Director, responsible for all aspects of the programme, from academic content to entertainment and welfare. An important aspect of our Young Learners' courses is the high level of supervision, with an excellent staff to student ratio.

Teachers are chosen for their experience in working with young people as well as their ability and enthusiasm.

Our Activity Leaders are enthusiastic, energetic and keen to work with young people. Activity Leaders run the leisure programme after classes each day and ensure that Young Learners are carefully supervised at all times.

Medical treatment and emergencies

Students who are nationals of an EU country can receive free emergency treatment on the National Health Service. In the event of an emergency, if we cannot contact a child's parents, the Principal will make whatever decision is necessary for the child's wellbeing. Any expenses incurred in this way are payable by the student's parents.

Supervision

On all outings, students are escorted by our Activity Leaders. We do not allow any of our Young Learners, whether staying in residence or in Homestay, to go out in the evening, except when they join the group for organised, supervised activities, or in the event that parental consent is received.

Accommodation

In Edinburgh we offer accommodation with friendly Homestay families and in residence at the University of Edinburgh. There are also fully residential courses at St Andrews in Fife, which has a wide variety of recreational facilities on campus, as well as being a centre for living and studying.

Homestay

Homestays, who offer traditional Scottish hospitality in their own homes in Edinburgh, are a popular choice. Families are very carefully chosen, and many have been welcoming our students for years. Our full-time Accommodation and Welfare Officer visits and inspects the homes regularly and all homestays undergo a Police Disclosure Check.

Students share a room with another young person of a different mother tongue, unless two students have particularly asked to be together. Homestays provide breakfast and an evening meal 7 days a week, with lunch at the weekend. We provide cooked and buffet lunches in our teaching centre on weekdays. Students are shown how to get to school either on the day they arrive or on the first day of school and are made aware of travel arrangements.

Residence

Residences offer a friendly atmosphere for all students with supervision provided by residential staff. Single study bedrooms (twins also available at St.Leonards) all have wash basins, and there are spacious common rooms, showers, baths and toilets as well as laundry facilities. Students take breakfast and evening meals in residence during the week (lunch is provided at the teaching centre), with full board at weekends. Residential students in Edinburgh are accompanied by staff to school in the morning, and are taken by private coach to Mary Erskine School.

Arrivals and Departures

For both Edinburgh and St. Andrews, students should arrive on the Sunday before the course starts and leave on the Saturday after the course finishes. Standard transfer times are 09.00 - 20.00. For those who do not arrive on the Sunday or depart on the Saturday, or arrive or depart outside these times, transfer supplements are payable as follows:

Edinburgh – £55 one way St.Andrews – £130 one way

	Full Time	Part Time		Combination 5	Combination 10
Intensive English	27.5 hours	17.5 hours	Combination Course	27.5 hours	32.5 hours
1 week	£521	£367	1 week	£815	£1151
2 - 3 weeks	£441	£287	2 - 3 weeks	£735	£1071
4 - 7 weeks	£421	£287	4 - 7 weeks	£715	£1051
8 - 11 weeks	£401	£287	8 - 11 weeks	£695	£1031
12 - 23 weeks	£381	£287	12 - 23 weeks	£675	£1011
24+ weeks	£371	£287	24+ weeks	£665	£1001

Tutorial	15 hours	20 hours	25 hours	30 hours	35 hours
1 week	£1088	£1424	£1760	£2096	£2432
2 - 3 weeks	£1008	£1344	£1680	£2016	£2352
4 - 7 weeks	£988	£1324	£1660	£1996	£2332

Exam courses							
IELTS exam courses	Full Time	Price					
2 - 3 weeks	27.5	£441					
4 - 7 weeks	27.5	£421					
8 - 11 weeks	27.5	£401					
12 - 23 weeks	27.5	£381					
24+ weeks	27.5	£371					
FCE, CAE, CPE exam courses	Weeks	Hours	Total price	FCE exam	CAE exam	CPE exam	
16.01.12 - 09.03.12	8 **	27.5	£3208	10/03/2012	17/03/2012	10/03/2012	
16.04.12 - 08.06.12	8 *	27.5	£3208	12/06/2012	13/06/2012	14/06/2012	
08.10.12 - 30.11.12	8 *	27.5	£3208	04/12/2012	05/12/2012	06/12/2012	
FCE, CAE Summer exam courses	Weeks	Hours	Total price	FCE exam	CAE exam		
25.06.12 - 17.08.12	8*	27.5	£3208	23/08/12	24/08/12		

* On these courses, the exam takes place the week after the course end date and therefore students should book an additional week's accommodation.

** The FCE and CPE exam take place on 10.03.12 and therefore students should book one additional night's accommodation. The CAE exam takes place on 17.03.12. and therefore students require an additional week's accommodation.

Teachers Refresher Courses	Hours	Total price	Summer Methodology Course	Hours	Total price
05.03.12 - 16.03.12	27.5	£910	02.07.12 - 13.07.12	20	£672
02.04.12 - 13.04.12	27.5	£910	16.07.12 - 27.07.12	20	£672
07.05.12 - 18.05.12	27.5	£910	06.08.12 - 17.08.12	20	£672
10.09.12 - 21.09.12	27.5	£910	Content and Language Integrated Learning	Hours	Total Price
08.10.12 - 19.10.12	27.5	£910	16.04.12 - 27.04.12	20	£672
05.11.12 - 16.11.12	27.5	£910	13.08.12 - 24.08.12	20	£672

Adult Accommodation	Homestay	Homestay	Residence	Apartment	Airport Transfer
	Standard	En-suite	Catered	Self Catering	£50 one way
Per week	£175	£275	£345 *	£250 **	
Extra night	£35	£45	£55	£40	

Arrival Sunday prior to course date, departure Saturday

Accommodation in both homestay and residence is single room with half board

*Residential accommodation is available only during July and August

** Self-catering rate is based on a shared apartment and is available during the months of July and August.

Information on studio apartments is available upon request

14-17 Edinburgh	Homestay	Residence	14-17 Edinburgh	Homestay	Residence
2 week programmes			3 week programmes		
01.07.12 - 14.07.12	£1428	£1995	01.07.12 - 21.07.12	£2142	£2992
08.07.12 - 21.07.12	£1428	£1995	08.07.12 - 28.07.12	£2142	£2992
15.07.12 - 28.07.12	£1428	£1995	15.07.12 - 04.08.12	£2142	£2992
22.07.12 - 04.08.12	£1428	£1995			

9 -13 St. Andrews	Residence	9 -13 St. Andrews	Residence
2 week programmes		4 week programme	
08.07.12 - 21.07.12	£1764	08.07.12 - 04.08.12	£3528
22.07.12 - 04.08.12	£1764		



CIB CANARIAS S.L. SOLICITUD DE INSCRIPCIÓN

Rellene esta solicitud en letras MAYÚSCULAS y envíe o entreguela a: CIB Canarias, s.l. C/ Lope de Vega, 30, Local - 38005 S/C de Tenerife, con 2 fotos tamaño carnet y una copia del comprobante de pago de la matrícula correspondiente en Lloyds Bank (0106-0070-11-0070043779).

En Canarias desde 1976

Incluir
2
FOTOS
tamaño carnet

CURSO SOLICITADO	Familia	Residencia	Familia	Residencia	REFERENCIA INTERNA
STEVENAGE (Ref. CIB-1)	<input type="radio"/>		EDIMBURGO (Ref. CIB-4)	<input type="radio"/>	<input type="radio"/>
BOURNEMOUTH (Ref. CIB-2)	<input type="radio"/>	<input type="radio"/>	MALTA (Ref. CIB-5)	<input type="radio"/>	<input type="radio"/>
LONDRES (Ref. CIB-3)	<input type="radio"/>	<input type="radio"/> (Ref.....)	<input type="radio"/>	<input type="radio"/>

¿Curso con beca? Sí* No *¿Cual?

Fecha inicio..... Fecha fin..... N° de semanas..... N° clases semanales..... N° horas semanales.....
dd/mm/aa

Ida-Aeropuerto llegada..... Fecha llegada..... Compañía..... N° de vuelo.....
dd/mm/aa

Servicio Transfer Vuelta-Aeropuerto salida..... Fecha salida..... Compañía..... N° de vuelo.....

DATOS PERSONALES DEL ALUMNO RELLENAR CON TINTA NEGRA

APELLIDOS DEL ALUMNO		NOMBRE		FECHA DE NACIMIENTO	EDAD	SEXO
						<input type="radio"/> CHICO <input type="radio"/> CHICA
DIRECCIÓN COMPLETA				POBLACIÓN	CÓDIGO POSTAL	
ISLA	N° TELÉFONO FIJO	N° MÓVIL (ALUMNO)	N° D.N.I. (ALUMNO)	NACIONALIDAD		
LENGUA MATERNA	E-MAIL			N° FAX		
PROFESIÓN	CARÁCTER	EDADES DE LOS HERMANOS	PUESTO ENTRE LOS HERMANOS	FUMA	¿VEGETARIANO/A?	
	<input type="radio"/> ABIERTO <input type="radio"/> RESERVADO		<input type="radio"/> MAYOR <input type="radio"/> MEDIO <input type="radio"/> MENOR	<input type="radio"/> SÍ <input type="radio"/> NO	<input type="radio"/> SÍ <input type="radio"/> NO	
INTERESES Y AFICIONES	ENFERMEDADES INFANTILES PADECIDAS					
	<input type="radio"/> SARAMPIÓN <input type="radio"/> VARICELA <input type="radio"/> PAPERAS <input type="radio"/> OTRA:					
¿PADECE ALGÚN TIPO DE ALERGIA? <input type="radio"/> SÍ* <input type="radio"/> NO	¿PRECISA MEDICACIÓN DURANTE EL CURSO? <input type="radio"/> SÍ* <input type="radio"/> NO	¿SUFRE ALGUNA DISCAPACIDAD? <input type="radio"/> SÍ* <input type="radio"/> NO				
*¿CUAL?	*¿CUAL?	*¿CUAL?				
CENTRO DE ESTUDIOS	CURSO	NIVEL DE INGLÉS				
		<input type="radio"/> MUY ALTO <input type="radio"/> ALTO <input type="radio"/> MEDIO <input type="radio"/> ELEMENTAL				
¿QUIÉN LE RECOMENDÓ A CIB Canarias?		¿HA VISITADO ANTERIORMENTE INGLATERRA EN VIAJE DE ESTUDIOS? <input type="radio"/> SÍ* <input type="radio"/> NO				
<input type="radio"/> AMISTADES <input type="radio"/> PUBLICIDAD <input type="radio"/> COLEGIO <input type="radio"/> ACADEMIA <input type="radio"/> INTERNET		<input type="checkbox"/> CON CIB <input type="checkbox"/> CON OTRA EMPRESA -¿CUAL?				

DATOS FAMILIARES

APELLIDOS DE LA MADRE O TUTOR/A LEGAL		NOMBRE		PROFESIÓN
N° D.N.I.	N° MÓVIL	N° TELÉFONO OFICINA	E-MAIL MADRE	
APELLIDOS DEL PADRE		NOMBRE		PROFESIÓN
N° D.N.I.	N° MÓVIL	N° TELÉFONO OFICINA	E-MAIL PADRE	
DIRECCIÓN DURANTE EL CURSO (SI DIFERENTE DE LA HABITUAL)				N° TELÉFONO

SEGURO DE VIAJE	FECHA DE INICIO DEL SEGURO	FECHA DEL FINAL DEL SEGURO	SEGURO DE CANCELACIÓN
<input type="radio"/> SÍ <input type="radio"/> NO	dd / mm / aa	dd / mm / aa	SÓLO CONTRATABLE EN EL MOMENTO DE REALIZAR LA INSCRIPCIÓN. <input type="radio"/> SÍ <input type="radio"/> NO CONDICIONES Y PRECIO DISPONIBLES BAJO SOLICITUD.

OBSERVACIONES:

En.....a.....de.....de 20.....

Firma del estudiante o Tutor/a legal del menor

Confirmo la veracidad de los datos aportados, he leído ambos lados de esta solicitud y estoy conforme.

INSCRIBIA EN EL REGISTRO MERCANTIL DE S.A. CRUZ DE TENERIFE - H. T.F. 4039 - F. 125 - T. 1335 - S. GRAL. - 1.º



CIB Canarias, s.l.
C/. Lope de Vega, n° 30
38005 Santa Cruz de Tenerife
Tel.: (+34) 922-22 83 83
Fax: (+34) 922-22 72 56

CONDICIONES PARTICULARES

1. En aras de garantizar la prestación de unos servicios óptimos, principal objetivo de su actividad, SE RESERVA EL DERECHO A LA CANCELACIÓN O MODIFICACIÓN, total o parcial de cualquier curso previsto y cuando las circunstancias así lo aconsejaren y en casos de fuerza mayor.
2. En caso de menores, será requisito indispensable para contratar los servicios de CIB la autorización o permiso al menor para viajar o bien de la persona que ostente la tutela o guarda legal del menor. Dicha autorización o permiso se exteriorizará con la suscripción de la correspondiente solicitud y la aportación del PASAPORTE VÁLIDO Y EN VIGOR del menor. La aportación del pasaporte del menor será requisito indispensable aún cuando España pertenece a la UE y a fin de acreditar tal autorización.
3. Asistencia Médica y Condiciones Sanitarias
 - 3.1. Aunque se contrate un seguro privado de viaje, rogamos obtengan la Tarjeta Sanitaria Europea (TSE) en cualquier Centro de Atención e Información de la Seguridad Social (CAISS). *(Llevarla junto con la documentación personal)*
 - 3.2. En caso de que no tenga derecho al seguro social español, se recomienda la contratación de un seguro privado de viaje. En caso de enfermedad, si las consultas médicas aconsejan la devolución del estudiante para someterse a tratamiento, la repatriación será por cuenta del propio estudiante o su seguro privado de viaje.
 - 3.3. Si tiene que tomar alguna medicación durante su estancia o en caso de incontinencia, también debe informarnos en esta solicitud.
4. Actividades, Comportamiento y Datos
 - 4.1. Toda lección y actividad es obligatoria. El alumno debe llegar puntualmente a las clases, mostrar interés y cortesía a los profesores y realizar las tareas y proyectos que por los mismos le sean encomendados.
 - 4.2. Durante su estancia el alumno debe respetar las costumbres de la familia anfitriona y acatar las normas impuestas por ella. Ordenará su dormitorio, será puntual en las comidas, pedirá permiso para usar el teléfono (pagando el coste) y no invitará a amigos a casa sin permiso de la familia.
 - 4.3. De conformidad con la vigente Ley Orgánica 15/1999 de Protección de Datos de Carácter Personal, CIB le informa de que los datos personales del Contratante se incorporarán al correspondiente fichero de esta entidad, quedando ésta autorizada al tratamiento de los mismos para su utilización en relación con el desenvolvimiento de este contrato, así como para la oferta y contratación de otros productos y servicios del grupo.
 - 4.4. CIB se reserva el derecho a utilizar las fotografías e imágenes de vídeo obtenidas durante el desarrollo del programa con fines de autopromoción.
5. Salidas nocturnas
 - 5.1. CIB NO ACEPTA RESPONSABILIDAD POR LOS ALUMNOS QUE EFECTÚEN SALIDAS NOCTURNAS ya que a partir de las 12:00 horas no estarán bajo la tutela de la organización.
6. Medidas correctoras del alumno por mala conducta o incumplimiento de las leyes locales
 - 6.1. En caso de producirse una infracción de las normas establecidas por CIB, concurrir mala conducta o incumplir las leyes locales, se podrán adoptar alguna de las siguientes medidas correctoras:
 - a) Aviso verbal
 - b) Repatriación del alumno.
 - 6.2. Los gastos del viaje de repatriación correrán por cuenta del estudiante o sus padres o representantes legales, así como las indemnizaciones por los daños y perjuicios causados a terceros, multas, etc. CIB deberá ser resarcida de los gastos efectuados como consecuencia de la mala conducta del alumno. Igualmente CIB deberá ser resarcida de los gastos efectuados en caso de emergencia, muerte, accidente o enfermedad del alumno.
 - 6.3. CIB se compromete a desempeñar sus cometidos con la debida diligencia para asegurar el correcto desarrollo de los cursos y a vigilar o controlar los servicios que por terceros deban ser prestados, haciendo todas las gestiones que estén a su alcance en beneficio del estudiante, pero no responderá de los daños y perjuicios causados o que se causen por terceros ajenos a la organización, ni tampoco asumirá responsabilidad por robos, pérdidas de ropa o equipaje, dinero o pertenencias particulares.

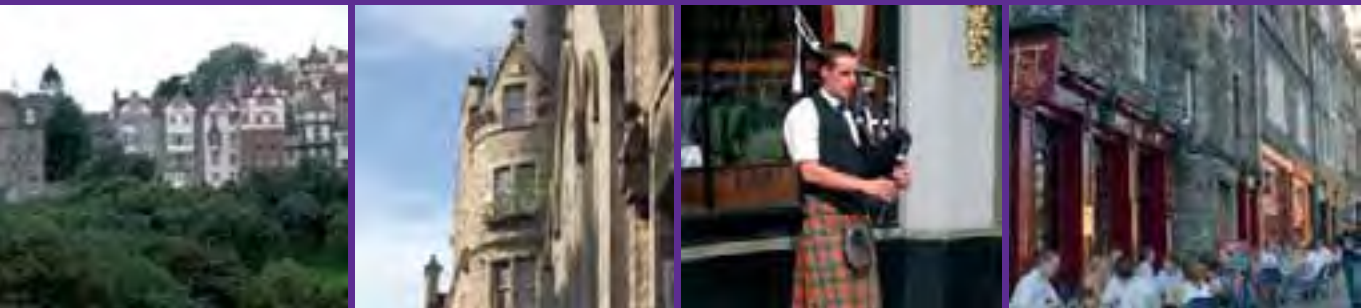
Los abajo firmantes en tanto que participantes y padres o tutores de dicho participante en el programa renunciamos expresamente a cualquier reclamación o acción contra CIB, sus colaboradores, agentes, profesores, acompañantes de grupo, centro de estudios y que se deriven de accidentes, retrasos, irregularidades o gastos devengados por causa de huelga, guerra, condiciones atmosféricas, cuarentena, restricciones u órdenes gubernativas, o por los daños corporales y materiales producidos como consecuencia de los servicios prestados por líneas aéreas, navieras, transportes públicos o privados, hoteles, restaurantes, o cualquier otro tipo de servicio ajeno.

Enterado y conforme con el condicionado de participación suscrito.

Firmado:

EL ALUMNO/A

Menores de 18 años
EL PADRE / MADRE o
TUTOR/A LEGAL



Accredited by the
 **BRITISH
COUNCIL**

ENGLISHUK
member

Education 
Innovative. Individual. Inspirational.

 **UNIVERSITY of CAMBRIDGE**
ESOL Examinations
Authorised Centre

Licensed by the UK Border Agency under Tier 4
of the Points Based System.
Sponsor Licence Number: T15Q6W062.

CIB Canarias, s.l. - C/ Lope de Vega, nº 30 - 38001 S/C de Tenerife
Tel.: +34.922.22.83.83 - Fax: +34.922.22.72.56

Web: www.cib.es - E-mail: cib@cib.es